



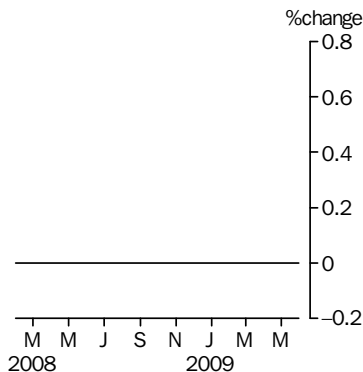
# RETAIL TRADE

AUSTRALIA

EMBARGO: 11.30AM (CANBERRA TIME) MON 3 AUG 2009

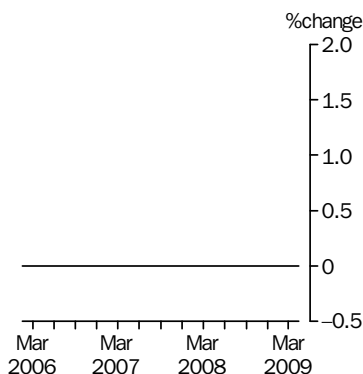
### Monthly turnover

Current prices  
Seasonally adjusted



### Quarterly turnover

in volume terms  
Trend estimate



## KEY FIGURES

	May 09 \$m	Apr 2009 to May 2009 % change
<b>Turnover at current prices</b>		
Trend estimates	—	—
Seasonally adjusted estimates	—	—

— nil or rounded to zero (including null cells)

	Mar Qtr 09 \$m	Dec Qtr 08 to Mar Qtr 09 % change
<b>Turnover, in volume terms</b>		
Trend estimates	—	—
Seasonally adjusted estimates	—	—

— nil or rounded to zero (including null cells)

## KEY POINTS

### CURRENT PRICES

- XXXXXXXX XXXXXXXXXXXX XXXXXXXX XXXXXXXXXXXX XXXXXXXX XXXXXXXXXXXX XXXXXXXXXXXX XXXXXXXX
- XXXXXXXX XXXXXXXXXXXX XXXXXXXX XXXXXXXXXXXX XXXXXXXX XXXXXXXXXXXX XXXXXXXXXXXX XXXXXXXX
- XXXXXXXX XXXXXXXXXXXX XXXXXXXX XXXXXXXXXXXX XXXXXXXX XXXXXXXXXXXX XXXXXXXXXXXX XXXXXXXX

### VOLUME MEASURES

- XXXXXXXX XXXXXXXXXXXX XXXXXXXX XXXXXXXXXXXX XXXXXXXX XXXXXXXXXXXX XXXXXXXXXXXX XXXXXXXX
- XXXXXXXX XXXXXXXXXXXX XXXXXXXX XXXXXXXXXXXX XXXXXXXX XXXXXXXXXXXX XXXXXXXXXXXX XXXXXXXX
- XXXXXXXX XXXXXXXXXXXX XXXXXXXX XXXXXXXXXXXX XXXXXXXX XXXXXXXXXXXX XXXXXXXXXXXX XXXXXXXX

## INQUIRIES

For further information about these and related statistics, contact the National Information and Referral Service on 1300 135 070.

## NOTES

### FORTHCOMING ISSUES

#### ISSUE

#### RELEASE DATE

August 2009	30 September 2009
September 2009	4 November 2009
October 2009	4 December 2009
November 2009	7 January 2010
December 2009	4 February 2010

.....

Brian Pink  
Australian Statistician

Sample Only

## ANALYSIS

---

TOTAL RETAIL—MONTHLY	xxx
	xxx
	xxx
	xxx
	xxx
	xxx
	xxx
	xxx
	xxx
	xxx
	xxx
TOTAL RETAIL—QUARTERLY	xxx
	xxx
	xxx
	xxx

Sample Only

RETAIL TURNOVER, By Industry Group

Month	Food retailing	Household goods retailing	Clothing, footwear and personal accessory retailing	Department stores	Other retailing	Cafes, restaurants and takeaway food services	Total
-------	----------------	---------------------------	---	-------------------	-----------------	---	-------

ORIGINAL (\$ million)

<b>2008</b>							
March	—	—	—	—	—	—	—
April	—	—	—	—	—	—	—
May	—	—	—	—	—	—	—
June	—	—	—	—	—	—	—
July	—	—	—	—	—	—	—
August	—	—	—	—	—	—	—
September	—	—	—	—	—	—	—
October	—	—	—	—	—	—	—
November	—	—	—	—	—	—	—
December	—	—	—	—	—	—	—

<b>2009</b>							
January	—	—	—	—	—	—	—
February	—	—	—	—	—	—	—
March	—	—	—	—	—	—	—
April	—	—	—	—	—	—	—
May	—	—	—	—	—	—	—

SEASONALLY ADJUSTED (\$ million)

<b>2008</b>							
March	—	—	—	—	—	—	—
April	—	—	—	—	—	—	—
May	—	—	—	—	—	—	—
June	—	—	—	—	—	—	—
July	—	—	—	—	—	—	—
August	—	—	—	—	—	—	—
September	—	—	—	—	—	—	—
October	—	—	—	—	—	—	—
November	—	—	—	—	—	—	—
December	—	—	—	—	—	—	—

<b>2009</b>							
January	—	—	—	—	—	—	—
February	—	—	—	—	—	—	—
March	—	—	—	—	—	—	—
April	—	—	—	—	—	—	—
May	—	—	—	—	—	—	—

TREND (\$ million)

<b>2008</b>							
March	—	—	—	—	—	—	—
April	—	—	—	—	—	—	—
May	—	—	—	—	—	—	—
June	—	—	—	—	—	—	—
July	—	—	—	—	—	—	—
August	—	—	—	—	—	—	—
September	—	—	—	—	—	—	—
October	—	—	—	—	—	—	—
November	—	—	—	—	—	—	—
December	—	—	—	—	—	—	—

<b>2009</b>							
January	—	—	—	—	—	—	—
February	—	—	—	—	—	—	—
March	—	—	—	—	—	—	—
April	—	—	—	—	—	—	—
May	—	—	—	—	—	—	—

— nil or rounded to zero (including null cells)

RETAIL TURNOVER, By Industry Group

Month	Food retailing	Household goods retailing	Clothing, footwear and personal accessory retailing	Department stores	Other retailing	Cafes, restaurants and takeaway food services	Total
-------	----------------	---------------------------	---	-------------------	-----------------	---	-------

ORIGINAL (% change from preceding month)

2008

March	—	—	—	—	—	—	—
April	—	—	—	—	—	—	—
May	—	—	—	—	—	—	—
June	—	—	—	—	—	—	—
July	—	—	—	—	—	—	—
August	—	—	—	—	—	—	—
September	—	—	—	—	—	—	—
October	—	—	—	—	—	—	—
November	—	—	—	—	—	—	—
December	—	—	—	—	—	—	—

2009

January	—	—	—	—	—	—	—
February	—	—	—	—	—	—	—
March	—	—	—	—	—	—	—
April	—	—	—	—	—	—	—
May	—	—	—	—	—	—	—

SEASONALLY ADJUSTED (% change from preceding month)

2008

March	—	—	—	—	—	—	—
April	—	—	—	—	—	—	—
May	—	—	—	—	—	—	—
June	—	—	—	—	—	—	—
July	—	—	—	—	—	—	—
August	—	—	—	—	—	—	—
September	—	—	—	—	—	—	—
October	—	—	—	—	—	—	—
November	—	—	—	—	—	—	—
December	—	—	—	—	—	—	—

2009

January	—	—	—	—	—	—	—
February	—	—	—	—	—	—	—
March	—	—	—	—	—	—	—
April	—	—	—	—	—	—	—
May	—	—	—	—	—	—	—

TREND (% change from preceding month)

2008

March	—	—	—	—	—	—	—
April	—	—	—	—	—	—	—
May	—	—	—	—	—	—	—
June	—	—	—	—	—	—	—
July	—	—	—	—	—	—	—
August	—	—	—	—	—	—	—
September	—	—	—	—	—	—	—
October	—	—	—	—	—	—	—
November	—	—	—	—	—	—	—
December	—	—	—	—	—	—	—

2009

January	—	—	—	—	—	—	—
February	—	—	—	—	—	—	—
March	—	—	—	—	—	—	—
April	—	—	—	—	—	—	—
May	—	—	—	—	—	—	—

— nil or rounded to zero (including null cells)

RETAIL TURNOVER, By State

Month      New South Wales      Victoria      Queensland      South Australia      Western Australia      Tasmania      Northern Territory      Australian Capital Territory      Australia

ORIGINAL (\$ million)

Month	New South Wales	Victoria	Queensland	South Australia	Western Australia	Tasmania	Northern Territory	Australian Capital Territory	Australia
<b>2008</b>									
March	—	—	—	—	—	—	—	—	—
April	—	—	—	—	—	—	—	—	—
May	—	—	—	—	—	—	—	—	—
June	—	—	—	—	—	—	—	—	—
July	—	—	—	—	—	—	—	—	—
August	—	—	—	—	—	—	—	—	—
September	—	—	—	—	—	—	—	—	—
October	—	—	—	—	—	—	—	—	—
November	—	—	—	—	—	—	—	—	—
December	—	—	—	—	—	—	—	—	—
<b>2009</b>									
January	—	—	—	—	—	—	—	—	—
February	—	—	—	—	—	—	—	—	—
March	—	—	—	—	—	—	—	—	—
April	—	—	—	—	—	—	—	—	—
May	—	—	—	—	—	—	—	—	—

SEASONALLY ADJUSTED (\$ million)

<b>2008</b>									
March	—	—	—	—	—	—	—	—	—
April	—	—	—	—	—	—	—	—	—
May	—	—	—	—	—	—	—	—	—
June	—	—	—	—	—	—	—	—	—
July	—	—	—	—	—	—	—	—	—
August	—	—	—	—	—	—	—	—	—
September	—	—	—	—	—	—	—	—	—
October	—	—	—	—	—	—	—	—	—
November	—	—	—	—	—	—	—	—	—
December	—	—	—	—	—	—	—	—	—
<b>2009</b>									
January	—	—	—	—	—	—	—	—	—
February	—	—	—	—	—	—	—	—	—
March	—	—	—	—	—	—	—	—	—
April	—	—	—	—	—	—	—	—	—
May	—	—	—	—	—	—	—	—	—

TREND (\$ million)

<b>2008</b>									
March	—	—	—	—	—	—	—	—	—
April	—	—	—	—	—	—	—	—	—
May	—	—	—	—	—	—	—	—	—
June	—	—	—	—	—	—	—	—	—
July	—	—	—	—	—	—	—	—	—
August	—	—	—	—	—	—	—	—	—
September	—	—	—	—	—	—	—	—	—
October	—	—	—	—	—	—	—	—	—
November	—	—	—	—	—	—	—	—	—
December	—	—	—	—	—	—	—	—	—
<b>2009</b>									
January	—	—	—	—	—	—	—	—	—
February	—	—	—	—	—	—	—	—	—
March	—	—	—	—	—	—	—	—	—
April	—	—	—	—	—	—	—	—	—
May	—	—	—	—	—	—	—	—	—

— nil or rounded to zero (including null cells)

# 4

## RETAIL TURNOVER, By State

Month	New South Wales	Victoria	Queensland	South Australia	Western Australia	Tasmania	Northern Territory	Australian Capital Territory	Australia
-------	-----------------	----------	------------	-----------------	-------------------	----------	--------------------	------------------------------	-----------

### ORIGINAL (% change from preceding month)

2008	New South Wales	Victoria	Queensland	South Australia	Western Australia	Tasmania	Northern Territory	Australian Capital Territory	Australia
March	—	—	—	—	—	—	—	—	—
April	—	—	—	—	—	—	—	—	—
May	—	—	—	—	—	—	—	—	—
June	—	—	—	—	—	—	—	—	—
July	—	—	—	—	—	—	—	—	—
August	—	—	—	—	—	—	—	—	—
September	—	—	—	—	—	—	—	—	—
October	—	—	—	—	—	—	—	—	—
November	—	—	—	—	—	—	—	—	—
December	—	—	—	—	—	—	—	—	—

2009	New South Wales	Victoria	Queensland	South Australia	Western Australia	Tasmania	Northern Territory	Australian Capital Territory	Australia
January	—	—	—	—	—	—	—	—	—
February	—	—	—	—	—	—	—	—	—
March	—	—	—	—	—	—	—	—	—
April	—	—	—	—	—	—	—	—	—
May	—	—	—	—	—	—	—	—	—

### SEASONALLY ADJUSTED (% change from preceding month)

2008	New South Wales	Victoria	Queensland	South Australia	Western Australia	Tasmania	Northern Territory	Australian Capital Territory	Australia
March	—	—	—	—	—	—	—	—	—
April	—	—	—	—	—	—	—	—	—
May	—	—	—	—	—	—	—	—	—
June	—	—	—	—	—	—	—	—	—
July	—	—	—	—	—	—	—	—	—
August	—	—	—	—	—	—	—	—	—
September	—	—	—	—	—	—	—	—	—
October	—	—	—	—	—	—	—	—	—
November	—	—	—	—	—	—	—	—	—
December	—	—	—	—	—	—	—	—	—

2009	New South Wales	Victoria	Queensland	South Australia	Western Australia	Tasmania	Northern Territory	Australian Capital Territory	Australia
January	—	—	—	—	—	—	—	—	—
February	—	—	—	—	—	—	—	—	—
March	—	—	—	—	—	—	—	—	—
April	—	—	—	—	—	—	—	—	—
May	—	—	—	—	—	—	—	—	—

### TREND (% change from preceding month)

2008	New South Wales	Victoria	Queensland	South Australia	Western Australia	Tasmania	Northern Territory	Australian Capital Territory	Australia
March	—	—	—	—	—	—	—	—	—
April	—	—	—	—	—	—	—	—	—
May	—	—	—	—	—	—	—	—	—
June	—	—	—	—	—	—	—	—	—
July	—	—	—	—	—	—	—	—	—
August	—	—	—	—	—	—	—	—	—
September	—	—	—	—	—	—	—	—	—
October	—	—	—	—	—	—	—	—	—
November	—	—	—	—	—	—	—	—	—
December	—	—	—	—	—	—	—	—	—

2009	New South Wales	Victoria	Queensland	South Australia	Western Australia	Tasmania	Northern Territory	Australian Capital Territory	Australia
January	—	—	—	—	—	—	—	—	—
February	—	—	—	—	—	—	—	—	—
March	—	—	—	—	—	—	—	—	—
April	—	—	—	—	—	—	—	—	—
May	—	—	—	—	—	—	—	—	—

— nil or rounded to zero (including null cells)

RETAIL TURNOVER, Volume and Price—Seasonally adjusted: **By Industry Group**

Quarter	Food retailing	Household goods retailing	Clothing, footwear and personal accessory retailing	Department stores	Other retailing	Cafes, restaurants and takeaway food services	Total
---------	----------------	---------------------------	---	-------------------	-----------------	---	-------

CURRENT PRICES (% change from preceding quarter)

<b>2007</b>							
March	—	—	—	—	—	—	—
June	—	—	—	—	—	—	—
September	—	—	—	—	—	—	—
December	—	—	—	—	—	—	—
<b>2008</b>							
March	—	—	—	—	—	—	—
June	—	—	—	—	—	—	—
September	—	—	—	—	—	—	—
December	—	—	—	—	—	—	—
<b>2009</b>							
March	—	—	—	—	—	—	—

CHAIN VOLUME MEASURES (% change from preceding quarter)

<b>2007</b>							
March	—	—	—	—	—	—	—
June	—	—	—	—	—	—	—
September	—	—	—	—	—	—	—
December	—	—	—	—	—	—	—
<b>2008</b>							
March	—	—	—	—	—	—	—
June	—	—	—	—	—	—	—
September	—	—	—	—	—	—	—
December	—	—	—	—	—	—	—
<b>2009</b>							
March	—	—	—	—	—	—	—

IMPLICIT PRICE DEFLATORS (% change from preceding quarter)

<b>2007</b>							
March	—	—	—	—	—	—	—
June	—	—	—	—	—	—	—
September	—	—	—	—	—	—	—
December	—	—	—	—	—	—	—
<b>2008</b>							
March	—	—	—	—	—	—	—
June	—	—	—	—	—	—	—
September	—	—	—	—	—	—	—
December	—	—	—	—	—	—	—
<b>2009</b>							
March	—	—	—	—	—	—	—

— nil or rounded to zero (including null cells)



RETAIL TURNOVER, Volume and Price—Seasonally adjusted: **By State**

Quarter	New South Wales	Victoria	Queensland	South Australia	Western Australia	Tasmania	Northern Territory	Australian Capital Territory	Australia
---------	-----------------	----------	------------	-----------------	-------------------	----------	--------------------	------------------------------	-----------

## CURRENT PRICES (% change from preceding quarter)

<b>2007</b>									
March	—	—	—	—	—	—	—	—	—
June	—	—	—	—	—	—	—	—	—
September	—	—	—	—	—	—	—	—	—
December	—	—	—	—	—	—	—	—	—
<b>2008</b>									
March	—	—	—	—	—	—	—	—	—
June	—	—	—	—	—	—	—	—	—
September	—	—	—	—	—	—	—	—	—
December	—	—	—	—	—	—	—	—	—
<b>2009</b>									
March	—	—	—	—	—	—	—	—	—

## CHAIN VOLUME MEASURES (% change from preceding quarter)

<b>2007</b>									
March	—	—	—	—	—	—	—	—	—
June	—	—	—	—	—	—	—	—	—
September	—	—	—	—	—	—	—	—	—
December	—	—	—	—	—	—	—	—	—
<b>2008</b>									
March	—	—	—	—	—	—	—	—	—
June	—	—	—	—	—	—	—	—	—
September	—	—	—	—	—	—	—	—	—
December	—	—	—	—	—	—	—	—	—
<b>2009</b>									
March	—	—	—	—	—	—	—	—	—

## IMPLICIT PRICE DEFLATORS (% change from preceding quarter)

<b>2007</b>									
March	—	—	—	—	—	—	—	—	—
June	—	—	—	—	—	—	—	—	—
September	—	—	—	—	—	—	—	—	—
December	—	—	—	—	—	—	—	—	—
<b>2008</b>									
March	—	—	—	—	—	—	—	—	—
June	—	—	—	—	—	—	—	—	—
September	—	—	—	—	—	—	—	—	—
December	—	—	—	—	—	—	—	—	—
<b>2009</b>									
March	—	—	—	—	—	—	—	—	—

— nil or rounded to zero (including null cells)

RETAIL TURNOVER, Chain Volume Measures—By Industry Group

Quarter	Food retailing	Household goods retailing	Clothing, footwear and personal accessory retailing	Department stores	Other retailing	Cafes, restaurants and takeaway food services	Total
ORIGINAL (\$ million)							
<b>2007</b>							
March	—	—	—	—	—	—	—
June	—	—	—	—	—	—	—
September	—	—	—	—	—	—	—
December	—	—	—	—	—	—	—
<b>2008</b>							
March	—	—	—	—	—	—	—
June	—	—	—	—	—	—	—
September	—	—	—	—	—	—	—
December	—	—	—	—	—	—	—
<b>2009</b>							
March	—	—	—	—	—	—	—
SEASONALLY ADJUSTED (\$ million)							
<b>2007</b>							
March	—	—	—	—	—	—	—
June	—	—	—	—	—	—	—
September	—	—	—	—	—	—	—
December	—	—	—	—	—	—	—
<b>2008</b>							
March	—	—	—	—	—	—	—
June	—	—	—	—	—	—	—
September	—	—	—	—	—	—	—
December	—	—	—	—	—	—	—
<b>2009</b>							
March	—	—	—	—	—	—	—
TREND (\$ million)							
<b>2007</b>							
March	—	—	—	—	—	—	—
June	—	—	—	—	—	—	—
September	—	—	—	—	—	—	—
December	—	—	—	—	—	—	—
<b>2008</b>							
March	—	—	—	—	—	—	—
June	—	—	—	—	—	—	—
September	—	—	—	—	—	—	—
December	—	—	—	—	—	—	—
<b>2009</b>							
March	—	—	—	—	—	—	—

— nil or rounded to zero (including null cells)

RETAIL TURNOVER, Chain Volume Measures—By Industry Group

Quarter	Food retailing	Household goods retailing	Clothing, footwear and personal accessory retailing	Department stores	Other retailing	Cafes, restaurants and takeaway food services	Total
ORIGINAL (% change from preceding quarter)							
<b>2007</b>							
March	—	—	—	—	—	—	—
June	—	—	—	—	—	—	—
September	—	—	—	—	—	—	—
December	—	—	—	—	—	—	—
<b>2008</b>							
March	—	—	—	—	—	—	—
June	—	—	—	—	—	—	—
September	—	—	—	—	—	—	—
December	—	—	—	—	—	—	—
<b>2009</b>							
March	—	—	—	—	—	—	—
SEASONALLY ADJUSTED (% change from preceding quarter)							
<b>2007</b>							
March	—	—	—	—	—	—	—
June	—	—	—	—	—	—	—
September	—	—	—	—	—	—	—
December	—	—	—	—	—	—	—
<b>2008</b>							
March	—	—	—	—	—	—	—
June	—	—	—	—	—	—	—
September	—	—	—	—	—	—	—
December	—	—	—	—	—	—	—
<b>2009</b>							
March	—	—	—	—	—	—	—
TREND (% change from preceding quarter)							
<b>2007</b>							
March	—	—	—	—	—	—	—
June	—	—	—	—	—	—	—
September	—	—	—	—	—	—	—
December	—	—	—	—	—	—	—
<b>2008</b>							
March	—	—	—	—	—	—	—
June	—	—	—	—	—	—	—
September	—	—	—	—	—	—	—
December	—	—	—	—	—	—	—
<b>2009</b>							
March	—	—	—	—	—	—	—

— nil or rounded to zero (including null cells)

RETAIL TURNOVER, Chain Volume Measures—By State

Quarter	New South Wales	Victoria	Queensland	South Australia	Western Australia	Tasmania	Northern Territory	Australian Capital Territory	Australia
---------	-----------------	----------	------------	-----------------	-------------------	----------	--------------------	------------------------------	-----------

ORIGINAL (\$ million)

<b>2007</b>									
March	—	—	—	—	—	—	—	—	—
June	—	—	—	—	—	—	—	—	—
September	—	—	—	—	—	—	—	—	—
December	—	—	—	—	—	—	—	—	—
<b>2008</b>									
March	—	—	—	—	—	—	—	—	—
June	—	—	—	—	—	—	—	—	—
September	—	—	—	—	—	—	—	—	—
December	—	—	—	—	—	—	—	—	—
<b>2009</b>									
March	—	—	—	—	—	—	—	—	—

SEASONALLY ADJUSTED (\$ million)

<b>2007</b>									
March	—	—	—	—	—	—	—	—	—
June	—	—	—	—	—	—	—	—	—
September	—	—	—	—	—	—	—	—	—
December	—	—	—	—	—	—	—	—	—
<b>2008</b>									
March	—	—	—	—	—	—	—	—	—
June	—	—	—	—	—	—	—	—	—
September	—	—	—	—	—	—	—	—	—
December	—	—	—	—	—	—	—	—	—
<b>2009</b>									
March	—	—	—	—	—	—	—	—	—

TREND (\$ million)

<b>2007</b>									
March	—	—	—	—	—	—	—	—	—
June	—	—	—	—	—	—	—	—	—
September	—	—	—	—	—	—	—	—	—
December	—	—	—	—	—	—	—	—	—
<b>2008</b>									
March	—	—	—	—	—	—	—	—	—
June	—	—	—	—	—	—	—	—	—
September	—	—	—	—	—	—	—	—	—
December	—	—	—	—	—	—	—	—	—
<b>2009</b>									
March	—	—	—	—	—	—	—	—	—

— nil or rounded to zero (including null cells)

Quarter	New South Wales	Victoria	Queensland	South Australia	Western Australia	Tasmania	Northern Territory	Australian Capital Territory	Australia
---------	-----------------	----------	------------	-----------------	-------------------	----------	--------------------	------------------------------	-----------

## ORIGINAL (% change from preceding quarter)

<b>2007</b>									
March	—	—	—	—	—	—	—	—	—
June	—	—	—	—	—	—	—	—	—
September	—	—	—	—	—	—	—	—	—
December	—	—	—	—	—	—	—	—	—
<b>2008</b>									
March	—	—	—	—	—	—	—	—	—
June	—	—	—	—	—	—	—	—	—
September	—	—	—	—	—	—	—	—	—
December	—	—	—	—	—	—	—	—	—
<b>2009</b>									
March	—	—	—	—	—	—	—	—	—

## SEASONALLY ADJUSTED (% change from preceding quarter)

<b>2007</b>									
March	—	—	—	—	—	—	—	—	—
June	—	—	—	—	—	—	—	—	—
September	—	—	—	—	—	—	—	—	—
December	—	—	—	—	—	—	—	—	—
<b>2008</b>									
March	—	—	—	—	—	—	—	—	—
June	—	—	—	—	—	—	—	—	—
September	—	—	—	—	—	—	—	—	—
December	—	—	—	—	—	—	—	—	—
<b>2009</b>									
March	—	—	—	—	—	—	—	—	—

## TREND (% change from preceding quarter)

<b>2007</b>									
March	—	—	—	—	—	—	—	—	—
June	—	—	—	—	—	—	—	—	—
September	—	—	—	—	—	—	—	—	—
December	—	—	—	—	—	—	—	—	—
<b>2008</b>									
March	—	—	—	—	—	—	—	—	—
June	—	—	—	—	—	—	—	—	—
September	—	—	—	—	—	—	—	—	—
December	—	—	—	—	—	—	—	—	—
<b>2009</b>									
March	—	—	—	—	—	—	—	—	—

— nil or rounded to zero (including null cells)

**EXPLANATORY NOTES**

---

INTRODUCTION	<b>1</b> xxxx
	<b>2</b> xxxx
SCOPE AND COVERAGE	<b>3</b> xxx
	<b>4</b> xxx
	<b>5</b> xx

Sample Only

Sample Only

## FOR MORE INFORMATION . . .

*INTERNET* **www.abs.gov.au** the ABS website is the best place for data from our publications and information about the ABS.

### INFORMATION AND REFERRAL SERVICE

Our consultants can help you access the full range of information published by the ABS that is available free of charge from our website. Information tailored to your needs can also be requested as a 'user pays' service. Specialists are on hand to help you with analytical or methodological advice.

*PHONE* 1300 135 070

*EMAIL* [client.services@abs.gov.au](mailto:client.services@abs.gov.au)

*FAX* 1300 135 211

*POST* Client Services, ABS, GPO Box 796, Sydney NSW 2001

## FREE ACCESS TO STATISTICS

All statistics on the ABS website can be downloaded free of charge.

*WEB ADDRESS* [www.abs.gov.au](http://www.abs.gov.au)